


Windows Subsystem for Linux - WSL

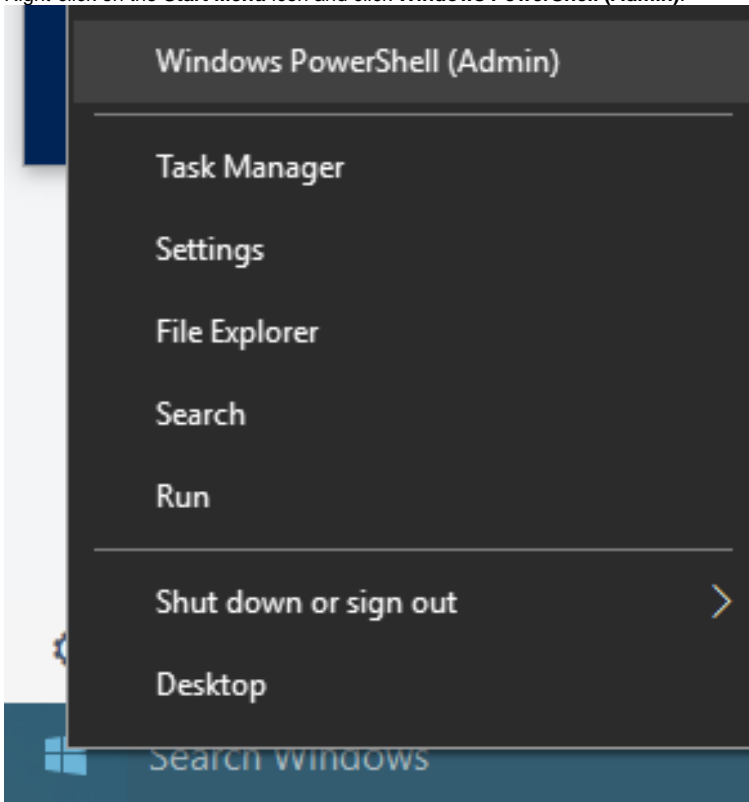
 You must be running Windows 10 (64-bit) version 1607 or above to install WSL.

Step-by-step guide

Part 1

The first part involves running a PowerShell script to enable WSL.

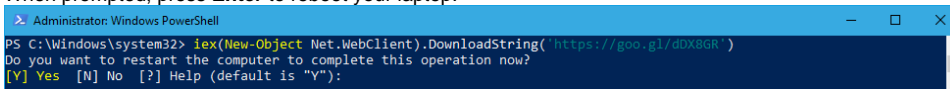
1. Right-click on the **Start Menu** icon and click **Windows PowerShell (Admin)**.



2. In the window that appears, enter the following command and press **Enter** to execute it.

```
iex(New-Object Net.WebClient).DownloadString('https://goo.gl/dDX8GR')
```

3. When prompted, press **Enter** to reboot your laptop.



Part 2

After completing part 1 and rebooting, you may now install Ubuntu on WSL.

1. Visit the [Ubuntu 18.04 LTS](#) app on the Microsoft Store.
2. Click the **Get** button to download the app.
3. Once installed, click the **Launch** button on the Ubuntu store page to install the distro.

4. When the process is finished, you'll be presented with a BASH prompt.

```
uoitstudent@UOAL17-DDK7XF2: /mnt/c/Windows/System32
Windows PowerShell
Copyright (C) 2016 Microsoft Corporation. All rights reserved.

PS C:\Windows\system32> bash
-- Beta feature --
This will install Ubuntu on Windows, distributed by Canonical
and licensed under its terms available here:
https://aka.ms/uowterms

Type "y" to continue: y
Downloading from the Windows Store... 41%
Error: 0x80072eff
Downloading from the Windows Store.100%
Extracting filesystem, this will take a few minutes...
Please create a default UNIX user account. The username does not need to match your Windows username.
For more information visit: https://aka.ms/wslusers
Enter new UNIX username: uoitstudent
Enter new UNIX password:
Retype new UNIX password:
passwd: password updated successfully
Installation successful!
The environment will start momentarily...
Documentation is available at: https://aka.ms/wsldocs
To run a command as administrator (user "root"), use "sudo <command>".
See "man sudo_root" for details.

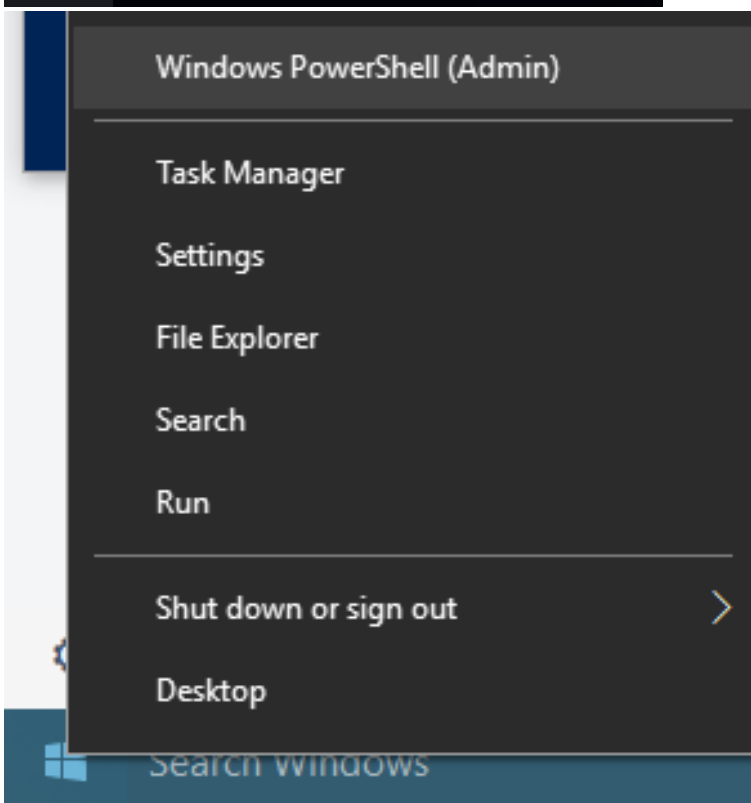
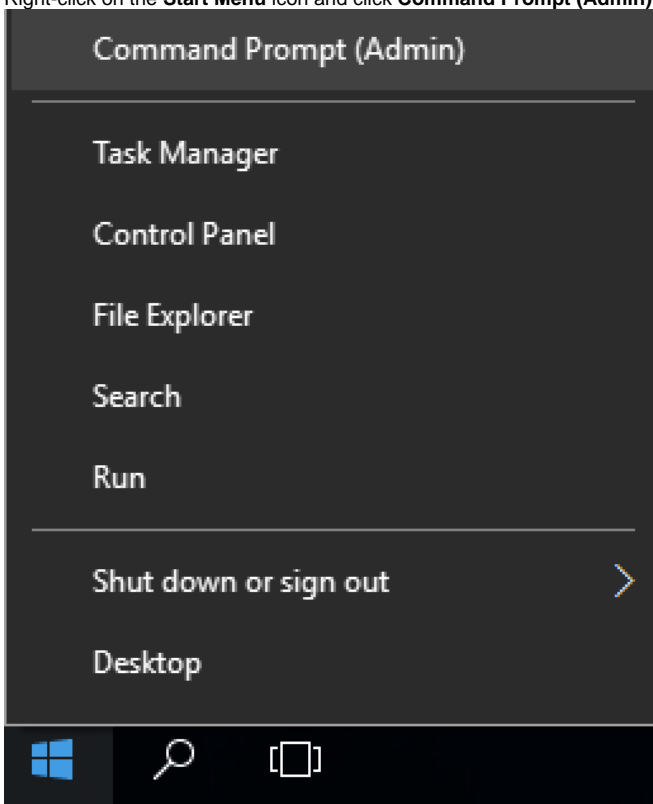
uoitstudent@UOAL17-DDK7XF2: /mnt/c/Windows/System32 $
```

 Try this if the above instructions do not work.

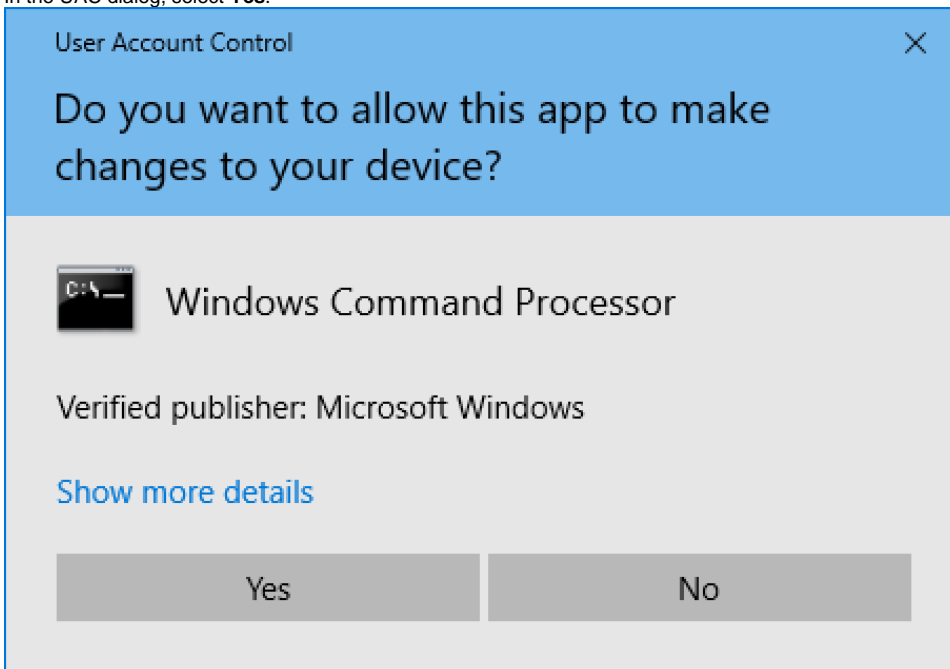
Part 1

The first part involves running a PowerShell script to enable WSL.

1. Right-click on the **Start Menu** icon and click **Command Prompt (Admin)**.



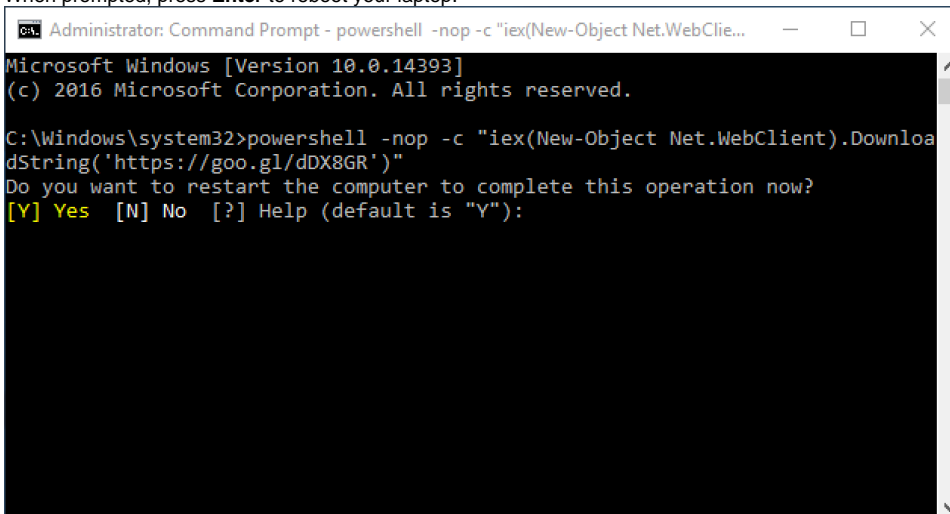
2. In the UAC dialog, select **Yes**.



3. In the window that appears, enter the following command and press **Enter** to execute it.

```
powershell -nop -c "iex(New-Object Net.WebClient).DownloadString('https://goo.gl/dDX8GR')"
```

4. When prompted, press **Enter** to reboot your laptop.



Part 2

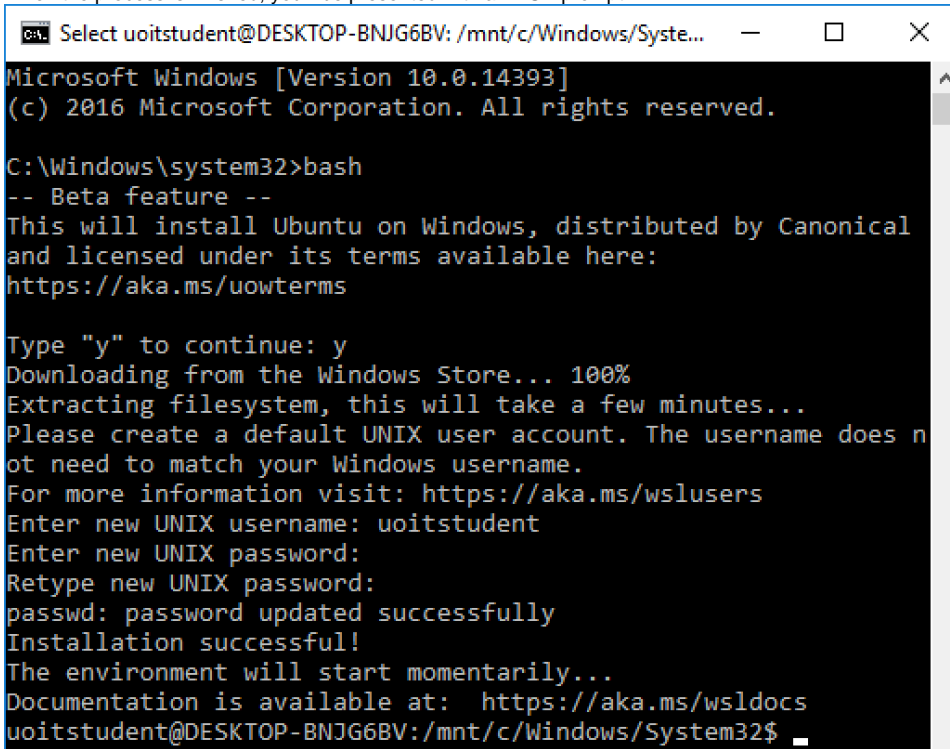
After completing part 1 and rebooting, you may now install WSL.

1. Right-click on the **Start Menu** icon and click **Command Prompt (Admin)**.
2. In the UAC dialog, select **Yes**.
3. In the window that appears, enter the following command and press **Enter** to execute it.

```
bash
```

4. Review the license terms, then press **y** and **Enter** to continue.
5. When prompted to create a user account, choose a username and password. Remember this information.

6. When the process is finished, you'll be presented with a BASH prompt.



```
ca. Select uoitstudent@DESKTOP-BNKG6BV: /mnt/c/Windows/Syste...
Microsoft Windows [Version 10.0.14393]
(c) 2016 Microsoft Corporation. All rights reserved.

C:\Windows\system32>bash
-- Beta feature --
This will install Ubuntu on Windows, distributed by Canonical
and licensed under its terms available here:
https://aka.ms/uowterms

Type "y" to continue: y
Downloading from the Windows Store... 100%
Extracting filesystem, this will take a few minutes...
Please create a default UNIX user account. The username does n
ot need to match your Windows username.
For more information visit: https://aka.ms/wslusers
Enter new UNIX username: uoitstudent
Enter new UNIX password:
Retype new UNIX password:
passwd: password updated successfully
Installation successful!
The environment will start momentarily...
Documentation is available at: https://aka.ms/wsldocs
uoitstudent@DESKTOP-BNKG6BV:/mnt/c/Windows/System32$
```

Further Reading

- [Windows Subsystem for Linux Documentation](#)

Related articles

- [Windows Subsystem for Linux - WSL](#)